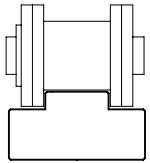
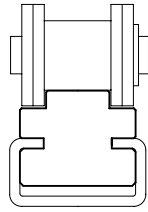


Chain Guides  
for Roller Chains  
to DIN8187

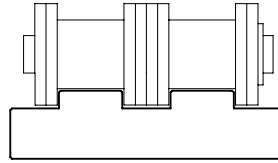
# Chain Guides for Roller Chains



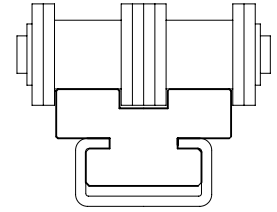
Type T  
on pg 94



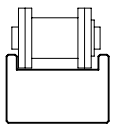
Type CT  
on pg 95



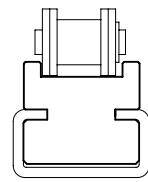
Type Double-T  
on pg 96



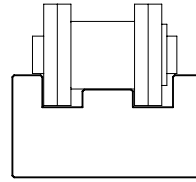
Type Double-CT  
on pg 97



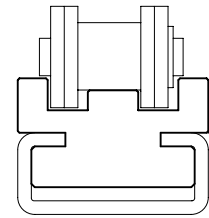
Type TU  
on pg 98



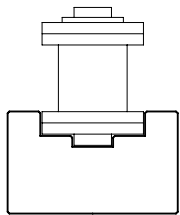
Type CTU  
on pg 99



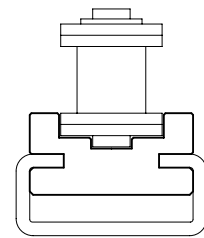
Type TS  
on pg 100



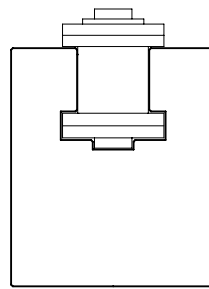
Type CTS  
on pg 101



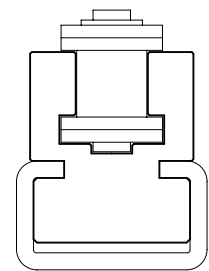
Type U  
on pg 102



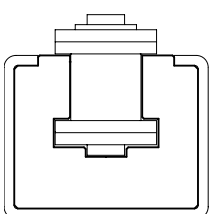
Type CU  
on pg 103



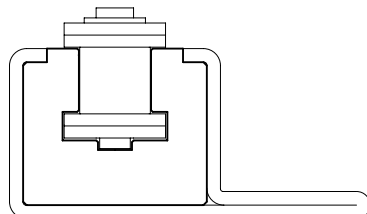
Type K  
on pg 104



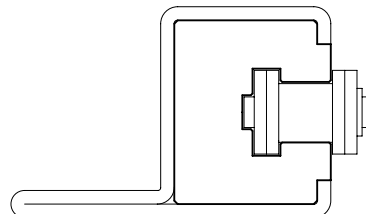
Type CK  
on pg 105



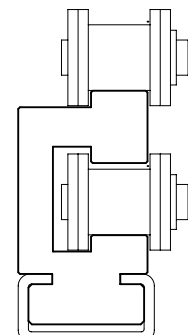
Type CKG  
on pg 106



Type CKG 15 V  
on pg 107



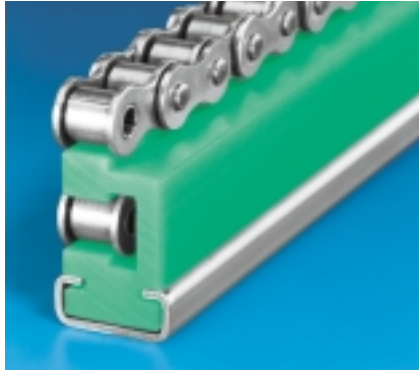
Type CKG 14 H  
on pg 108



Type ETA  
on pg 109

## Guides for Roller Chains

Our standard range of guides for roller chains comprises 16 different designs in two materials at your option: high-quality Original Material "S"<sup>®</sup> green and lower-cost Material "S" 1000<sup>®</sup> green.

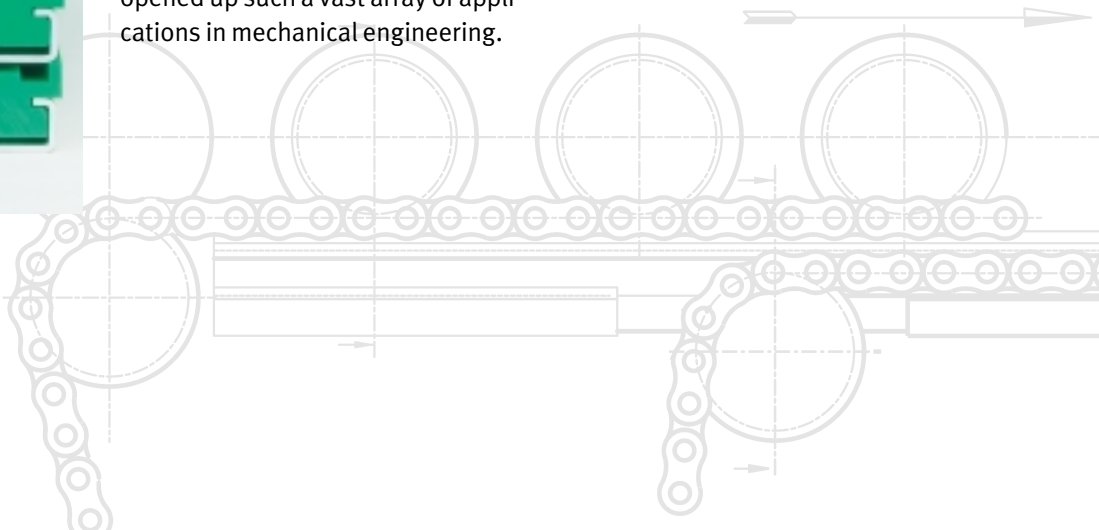


Material "S" 1000<sup>®</sup> is exclusively produced from ultra-macromolecular polyethylene. Its hi-tech manufacturing process mixes pure ultra-macromolecular polyethylene powder with ground Original Material "S"<sup>®</sup>. Under both high pressure and high temperature, this finely ground powder is then pressed into new semi-finished products. The result is a high-quality type of material impressive for its high abrasion resistance, good slide qualities and a very positive price-performance ratio.



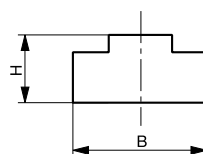
Original Material "S"<sup>®</sup> is produced on the basis of a pure ultra-macromolecular, low-pressure polyethylene.

Its raw materials to DIN16783 and its manufacturing process – continuously optimized over more than 40 years by now – of sintering under pressure ensure that Original Material "S"<sup>®</sup> retains the qualities which first opened up such a vast array of applications in mechanical engineering.



# Type T (Original Material "S"<sup>®</sup>green)

## Chain Guides for Roller Chains to **DIN8187**



Chain size in inches	Chain size DIN8187	B mm	H mm	Weight kg/m	Length (tolerance +0/+7) mm	Part no.	Availability
3/8" x 7/32"	06B-1	15	10	0.13	2000	221 010 002	●
1/2" x 3/16"	083-1	15	10	0.13	2000	221 010 003	●
1/2" x 1/4"	085-1	20	10	0.16	2000	221 010 004	○
1/2" x 5/16"	08B-1	20	10	0.18	2000	221 010 005	●
1/2" x 5/16"	08B-1	20	15	0.26	2000	221 010 006	●
1/2" x 5/16"	08B-1	20	20	0.34	2000	221 010 007	●
1/2" x 5/16"	08B-1	20	30	0.55	2000	221 010 008	●
5/8" x 1/4"	–	20	10	0.16	2000	221 010 009	○
5/8" x 3/8"	10B-1	20	10	0.16	2000	221 010 010	●
5/8" x 3/8"	10B-1	20	15	0.25	2000	221 010 011	●
5/8" x 3/8"	10B-1	20	20	0.36	2000	221 010 012	○
5/8" x 3/8"	10B-1	20	30	0.55	2000	221 010 013	○
3/4" x 7/16"	12B-1	25	10	0.20	2000	221 010 014	●
3/4" x 7/16"	12B-1	25	15	0.32	2000	221 010 015	●
3/4" x 7/16"	12B-1	25	20	0.43	2000	221 010 016	●
3/4" x 7/16"	12B-1	25	30	0.69	2000	221 010 017	●
1" x 17mm	16B-1	40	15	0.45	2000	221 010 018	●
1" x 17mm	16B-1	40	20	0.68	2000	221 010 019	●
1" x 17mm	16B-1	40	30	1.05	2000	221 010 020	●
1 1/4" x 3/4"	20B-1	45	15	0.55	2000	221 010 021	●
1 1/2" x 1"	24B-1	60	15	0.68	2000	221 010 022	●
1 3/4" x 31mm	28B-1	75	20	1.15	2000	221 010 023	○
2" x 31mm	32B-1	80	20	1.17	2000	221 010 024	○

All chain guides are available in Original Material "S"<sup>®</sup>green or Material "S" 1000<sup>®</sup>.

Please order as follows:

Example:

Chain guide in Original Material "S"<sup>®</sup>green

Part no.: 221 010 002

Chain guide in Material "S" 1000<sup>®</sup>green

Part no.: 221 020 002

Special sizes/designs, other technical or high-performance materials on request.

Special profiles, see pp. 143–145.

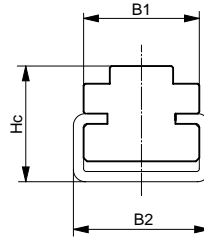
Intermediate sizes available at short notice and charged at full meter prices. Tolerances at cross-section of profile to DIN2768, tolerance class m. Properties of materials, see pg 14.

● ex stock

○ at short notice on request

# Type CT (Original Material "S"<sup>®</sup>green)

## Chain Guides with Steel C-Profile for Roller Chains to **DIN8187**



Chain size in inches	Chain size DIN8187	C-profile type	B <sub>1</sub> mm	B <sub>2</sub> mm	H <sub>c</sub> mm	Weight kg/m	Length chain guide (tolerance +0/+7) mm	Length steel C-profile (tolerance +0/+40) mm	Part no.	Availability
3/8" x 7/32"	06B-1	C3	17	20	17	0.81	2000	2000 6000	221 210 215 221 210 315	○ ○
1/2" x 3/16"	083-1	C3	17	20	17	0.81	2000	2000 6000	221 210 202 221 210 302	○ ○
1/2" x 1/4"	085-1	C3	17	20	17	0.81	2000	2000 6000	221 210 203 221 210 303	○ ○
1/2" x 5/16"	08B-1	C1	20	24	11	0.43	2000	2000 6000	221 210 201 221 210 301	● ●
1/2" x 5/16"	08B-1	C3	17	20	17	0.81	2000	2000 6000	221 210 204 221 210 304	● ●
5/8" x 1/4"	–	C3	17	20	17	0.82	2000	2000 6000	221 210 205 221 210 305	○ ●
5/8" x 3/8"	10B-1	C3	17	20	17	0.82	2000	2000 6000	221 210 206 221 210 306	● ●
3/4" x 7/16"	12B-1	C3	20	20	17	0.83	2000	2000 6000	221 210 207 221 210 307	● ●
3/4" x 7/16"	12B-1	C5	24	28	18	1.22	2000	2000 6000	221 210 208 221 210 308	● ●
1" x 17mm	16B-1	C5	24	28	18	1.23	2000	2000 6000	221 210 209 221 210 309	● ●
1 1/4" x 3/4"	20B-1	C5	28	28	18	1.23	2000	2000 6000	221 210 210 221 210 310	● ●
1 1/2" x 1"	24B-1	C9	33	38	30	2.61	2000	2000 6000	221 210 211 221 210 311	○ ○
1 3/4" x 31mm	28B-1	C9	38	38	30	2.66	2000	2000 6000	221 210 212 221 210 312	○ ○
2" x 31mm	32B-1	C9	38	38	30	2.66	2000	2000 6000	221 210 213 221 210 313	○ ○
2" x 31mm	32B-1	C12	60	60	35	3.31	2000	2000 6000	221 210 214 221 210 314	○ ○

All chain guides are available in Original Material "S"<sup>®</sup>green or Material "S" 1000<sup>®</sup>. Please order as follows:  
 Example:  
 Chain guide in Original Material "S"<sup>®</sup>green with steel C-profile, galvanized  
 Part no.: 221 210 215  
 Chain guide in Material "S" 1000<sup>®</sup>green with steel C-profile, galvanized  
 Part no.: 221 220 215

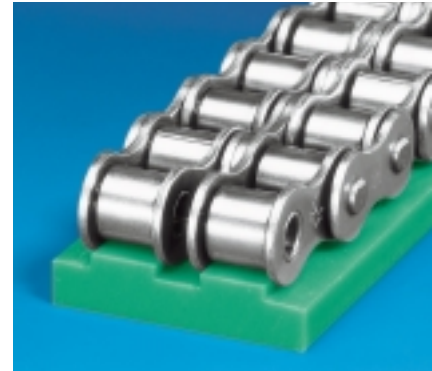
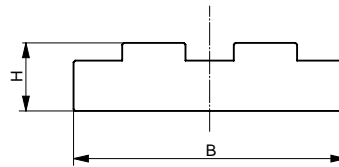
Special sizes/designs, other technical or high-performance materials on request.  
 Steel C-profile in stainless steel (V2A) also available ex stock.  
 Chain guides also available without steel C-profile. Special profiles, see pp 143–145.  
 Intermediate sizes available at short notice and charged at full meter prices. Tolerances at cross-section of plastic profile to DIN2768, tolerance class m.

Tolerances and sizes of steel C-profiles, see pp 135–136.  
 Properties of materials, see pg 14.

- ex stock
- at short notice on request

# Type Double-T (Original Material "S"<sup>®</sup>green)

Chain Guides for Roller Chains  
to **DIN8187**



Chain size in inches	Chain size DIN8187	B mm	H mm	Weight kg/m	Length (tolerance +0/+7) mm	Part no.	Availability
3/8" x 7/32"	06B-2	25	10	0.22	2000	221 010 025	●
1/2" x 5/16"	08B-2	35	10	0.30	2000	221 010 026	●
1/2" x 5/16"	08B-2	35	15	0.46	2000	221 010 027	●
1/2" x 5/16"	08B-2	35	20	0.63	2000	221 010 028	●
1/2" x 5/16"	08B-2	35	30	1.00	2000	221 010 029	○
5/8" x 3/8"	10B-2	40	10	0.32	2000	221 010 030	●
3/4" x 7/16"	12B-2	45	10	0.38	2000	221 010 032	●
3/4" x 7/16"	12B-2	45	15	0.49	2000	221 010 031	○
1" x 17mm	16B-2	48	15	0.60	2000	221 010 033	●
1 1/4" x 3/4"	20B-2	55	15	0.67	2000	221 010 034	○
1 1/2" x 1"	24B-2	72	20	1.40	2000	221 010 035	○
1 3/4" x 31mm	28B-2	89	25	2.15	2000	221 010 036	○
2" x 31mm	32B-2	88	30	2.55	2000	221 010 037	○

All chain guides are available in Original Material "S"<sup>®</sup>green or Material "S" 1000<sup>®</sup>.

Please order as follows:

Example:

Chain guide in Original Material "S"<sup>®</sup>green

Part no.: 221 010 025

Chain guide in Material "S" 1000<sup>®</sup> green

Part no.: 221 020 025

Special sizes/designs, other technical or high-performance materials on request.

Special profiles, see pp 143–145.

Intermediate sizes available at short notice and charged at full meter prices. Tolerances at cross-section of plastic profile to DIN2768,

tolerance class m.

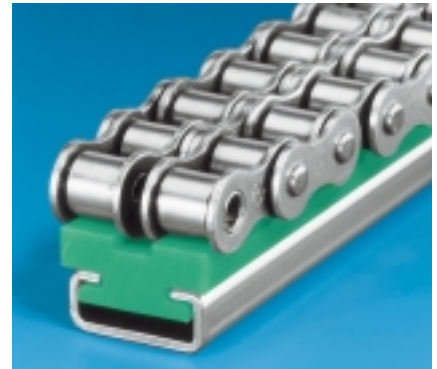
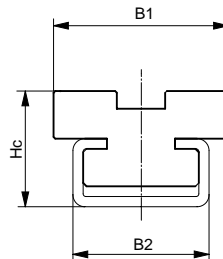
Properties of materials, see pg 14.

● ex stock

○ at short notice on request

# Type Double-CT (Original Material "S"<sup>®</sup>green)

Chain Guides with Steel C-Profile for Roller Chains to **DIN8187**



Chain size in inches	Chain size DIN8187	C-profile type	B <sub>1</sub> mm	B <sub>2</sub> mm	H <sub>c</sub> mm	Weight kg/m	Length chain guide (tolerance +0/+7) mm	Length steel C-profile (tolerance +0/+40) mm	Part no.	Availability
3/8" x 7/32"	06B-2	C3	15.7	20	17	0.71	2000	2000 6000	221 210 222 221 210 322	● ●
1/2" x 5/16"	08B-2	C3	21.2	20	17	0.82	2000	2000 6000	221 210 216 221 210 316	● ●
5/8" x 3/8"	10B-2	C3	25.7	20	17	0.83	2000	2000 6000	221 210 217 221 210 317	● ●
3/4" x 7/16"	12B-2	C5	30.7	28	20	1.24	2000	2000 6000	221 210 218 221 210 318	● ●
1" x 17mm	16B-2	C9	48.0	38	27	2.21	2000	2000 6000	221 210 219 221 210 319	○ ○
1 1/4" x 3/4"	20B-2	C12	55.0	60	30	3.47	2000	2000 6000	221 210 220 221 210 320	○ ○
1 1/2" x 1"	24B-2	C12	72.0	60	35	4.01	2000	2000 6000	221 210 221 221 210 321	○ ○

All chain guides are available in Original Material "S"<sup>®</sup>green or Material "S" 1000<sup>®</sup>.

Please order as follows:

Example:

Chain guide in Original Material "S"<sup>®</sup>green with steel C-profile, galvanized

Part no.: 221 210 222

Chain guide in Material "S" 1000<sup>®</sup>green with steel C-profile, galvanized

Part no.: 221 220 222

Special sizes/designs, other technical or high-performance materials on request.

Steel C-profile in stainless steel (V2A) also available ex stock.

Chain guides also available without steel C-profile.

Special profiles, see pp 143–145.

Intermediate sizes available at short notice and charged at full meter prices. Tolerances at cross-section of plastic profile to DIN2768, tolerance class m. Tolerances and sizes of steel C-profiles, see pp 135–136. Properties of materials, see pg 14.

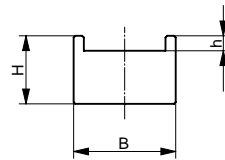
● ex stock

○ at short notice on request



# Type TU (Original Material "S"<sup>®</sup>green)

Chain Guides for Roller Chains  
to **DIN8187**



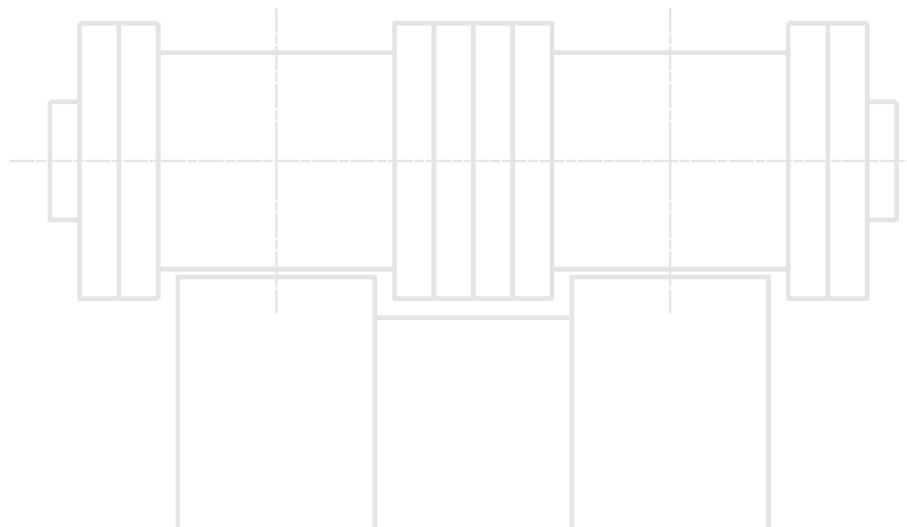
Chain size in inches	Chain size DIN8187	B mm	H mm	h mm	Weight kg/m	Length (tolerance +0/+7) mm	Part no.	Availability
3/8" x 5/32"	—	15	10	2.2	0.2	2000	221 110 010	○
1/2" x 3/16"	083-1							

All chain guides are available in Original Material "S"<sup>®</sup>green or Material "S" 1000<sup>®</sup>.  
Please order as follows:

Example:  
Chain guide in Original Material "S"<sup>®</sup>green  
Part no.: 221 110 010  
Chain guide in Material "S" 1000<sup>®</sup>green  
Part no.: 221 120 010

Special sizes/designs, other technical or high-performance materials on request.  
Special profiles, see pp 143–145.  
Intermediate sizes available at short notice and charged at full meter prices. Tolerances at cross-section of profile to DIN2768, tolerance class m.  
Properties of materials, see pg 14.

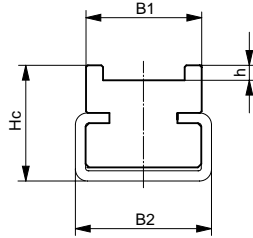
- ex stock
- at short notice on request





# Type CTU (Original Material "S"<sup>®</sup>green)

## Chain Guides with Steel C-Profile for Roller Chains to **DIN8187**



Chain size in inches	Chain size DIN8187	C-profile type	B <sub>1</sub> mm	B <sub>2</sub> mm	H <sub>c</sub> mm	h mm	Weight kg/m	Length chain guide (tolerance +0/+7) mm	Length steel C-profile (tolerance +0/+40) mm	Part no. with steel C-profile, galvanized	Availability
3/8" x 5/32"	–	C3	17	20	17	2.2	0.61	2000	2000	221 310 210	●
1/2" x 3/16"	083-1								6000	221 310 310	●

All chain guides are available in Original Material "S"<sup>®</sup>green or Material "S" 1000<sup>®</sup>.

Please order as follows:

Example:

Chain guide in Original Material "S"<sup>®</sup>green with steel C-profile, galvanized

Part no.: 221 310 210

Chain guide in Material "S" 1000<sup>®</sup>green with steel C-profile, galvanized

Part no.: 221 320 210

Special sizes/designs, other technical or high-performance materials on request.

Steel C-profile in stainless steel (V2A) also available ex stock.

Chain guides also available without steel C-profile.

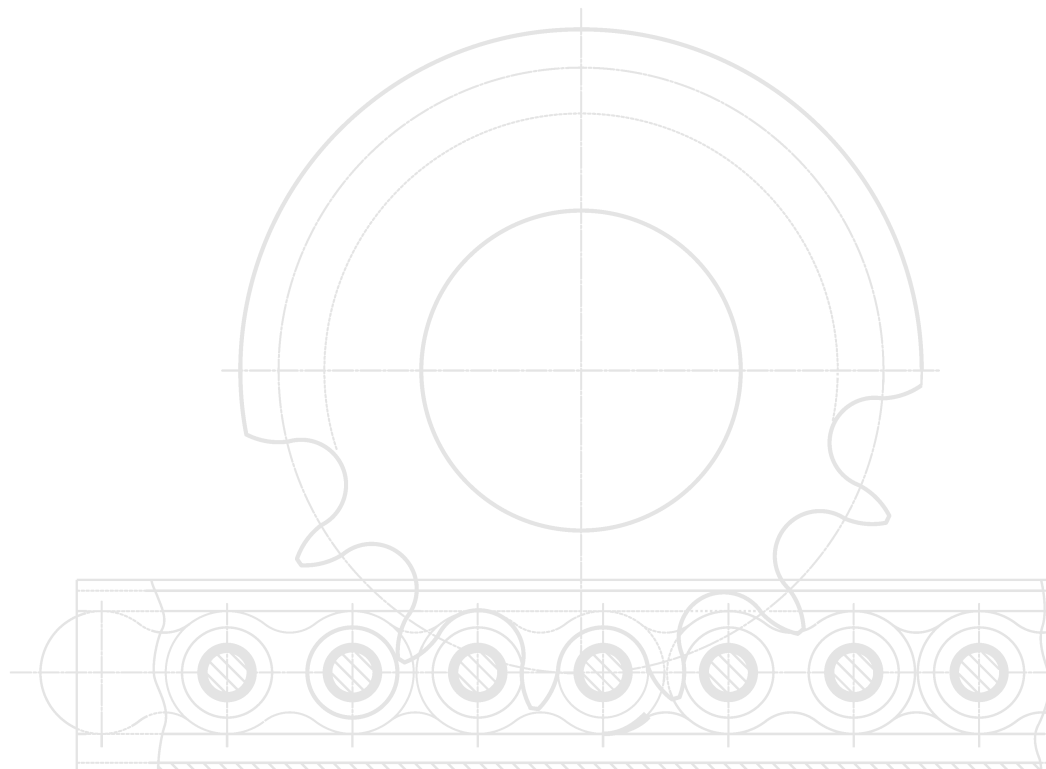
Special profiles, see pp 143–145.

Intermediate sizes available at short notice and charged at full meter prices. Tolerances at cross-section of plastic profile to DIN2768, tolerance class m.

Tolerances and sizes of steel C-profiles, see pp 135–136. Properties of materials, see pg 14.

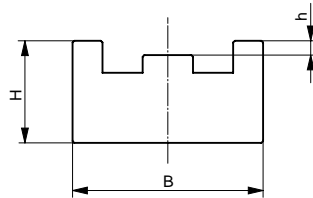
● ex stock

○ at short notice on request



# Type TS (Original Material "S"<sup>®</sup>green)

## Chain Guides for Roller Chains to **DIN8187**



Chain size in inches	Chain size DIN8187	B mm	H mm	h mm	Weight kg/m	Length (tolerance +0/+7) mm	Part no.	Availability
3/8" x 7/32"	06B-1	20	10	1.1	0.19	2000	221 110 001	●
1/2" x 3/16"	08B-1	20	10	1.4	0.19	2000	221 110 002	○
1/2" x 1/4"	085-1	22	10	1.6	0.21	2000	221 110 003	●
1/2" x 5/16"	08B-1	25	15	1.6	0.35	2000	221 110 004	●
5/8" x 1/4"	–	24	15	2.1	0.35	2000	221 110 005	○
5/8" x 3/8"	10B-1	28	15	2.1	0.39	2000	221 110 006	●
3/4" x 7/16"	12B-1	30	20	2.8	0.56	2000	221 110 007	●
1" x 17mm	16B-1	42	25	3.3	0.99	2000	221 110 008	●
1 1/4" x 3/4"	20B-1	50	25	4.0	1.18	2000	221 110 009	●

All chain guides are available in Original Material "S"<sup>®</sup>green or Material "S" 1000<sup>®</sup>.

Please order as follows:

Example:

Chain guide in Original Material "S"<sup>®</sup>green

Part no.: 221 110 001

Chain guide in Material "S" 1000<sup>®</sup> green

Part no.: 221 120 001

Special sizes/designs, other technical or high-performance materials on request.

Special profiles, see pp 143–145.

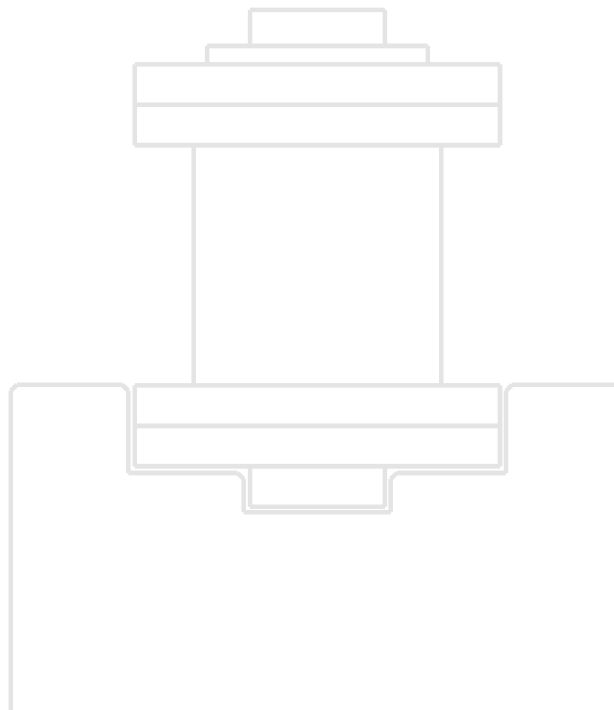
Intermediate sizes available at short notice and charged at full meter prices.

Tolerances at cross-section of profile to DIN2768, tolerance class m.

Properties of materials, see pg 14.

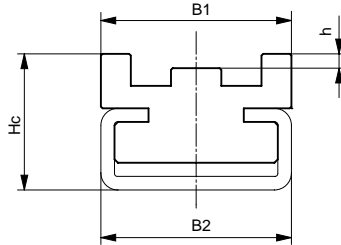
● ex stock

○ at short notice on request



# Type CTS (Original Material "S"<sup>®</sup>green)

## Chain Guides with Steel C-Profile for Roller Chains to **DIN8187**



Chain size in inches	Chain size DIN8187	C-profile type	B <sub>1</sub> mm	B <sub>2</sub> mm	H <sub>c</sub> mm	h mm	Weight kg/m	Length chain guide (tolerance +0/+7) mm	Length steel C-profile (tolerance +0/+40) mm	Part no. with steel C-profile, galvanized	Availability
3/8" x 7/32"	06B-1	C3	20	20	17	1.1	0.27	2000	2000 6000	221 310 201 221 310 301	● ●
1/2" x 3/16"	083-1	C3	20	20	17	1.4	0.27	2000	2000 6000	221 310 202 221 310 302	○ ○
1/2" x 1/4"	085-1	C3	22	20	17	1.6	0.80	2000	2000 6000	221 310 203 221 310 303	○ ○
1/2" x 5/16"	08B-1	C3	25	20	20	1.6	0.89	2000	2000 6000	221 310 204 221 310 304	● ●
5/8" x 1/4"	–	C3	25	20	20	2.1	0.89	2000	2000 6000	221 310 205 221 310 305	○ ○
5/8" x 3/8"	10B-1	C5	28	28	20	2.1	1.31	2000	2000 6000	221 310 206 221 310 306	● ●
3/4" x 7/16"	12B-1	C5	30	28	22	2.8	1.37	2000	2000 6000	221 310 207 221 310 307	● ●
1" x 17mm	16B-1	C9	42	38	30	3.3	2.42	2000	2000 6000	221 310 208 221 310 308	● ●
1 1/4" x 3/4"	20B-1	C9	50	38	35	4.0	2.84	2000	2000 6000	221 310 209 221 310 309	● ●

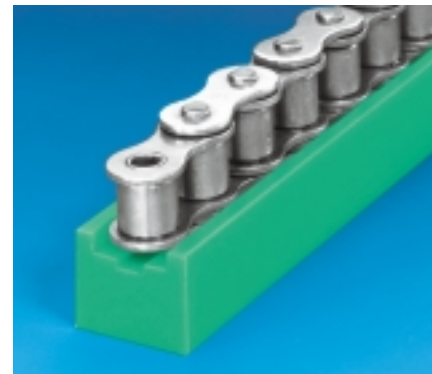
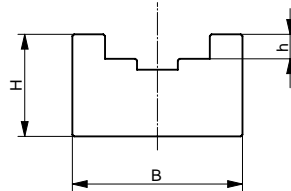
All chain guides are available in Original Material "S"<sup>®</sup>green or Material "S" 1000<sup>®</sup>. Please order as follows:  
Example:  
Chain guide in Original Material "S"<sup>®</sup>green with steel C-profile, galvanized  
Part no.: 221 310 201  
Chain guide in Material "S" 1000<sup>®</sup>green with steel C-profile, galvanized  
Part no.: 221 320 201

Special sizes/designs, other technical or high-performance materials on request.  
Steel C-profile in stainless steel (V2A) also available ex stock.  
Chain guides also available without steel C-profile.  
Special profiles, see pp 143–145.  
Intermediate sizes available at short notice and charged at full meter prices. Tolerances at cross-section of plastic profile to DIN2768, tolerance class m. Tolerances and sizes of steel C-profiles, see pp 135-136.  
Properties of materials, see pg 14.

- ex stock
- at short notice on request

# Type U (Original Material "S"<sup>®</sup> green)

## Chain Guides for Roller Chains to **DIN8187**



Chain size in inches	Chain size DIN8187	B mm	H mm	h mm	Weight kg/m	Length (tolerance +0/+7) mm	Part no.	Availability
3/8" x 5/32"	–	20	15	2.8	0.26	2000	221 110 012	○
3/8" x 7/32"	06B-1	20	15	2.8	0.26	2000	221 110 013	●
1/2" x 3/16"	083-1	20	15	2.3	0.25	2000	221 110 014	○
1/2" x 1/4"	085-1	20	15	3.2	0.25	2000	221 110 015	○
1/2" x 5/16"	08B-1	25	15	3.5	0.31	2000	221 110 017	●
5/8" x 1/4"	–	25	15	3.6	0.30	2000	221 110 016	○
5/8" x 3/8"	10B-1	25	15	3.6	0.30	2000	221 110 019	●
3/4" x 7/16"	12B-1	25	20	3.9	0.40	2000	221 110 020	●
1" x 17mm	16B-1	33	25	8.4	0.60	2000	221 110 021	●
1 1/4" x 3/4"	20B-1	55	25	10.0	1.08	2000	221 110 022	○
1 1/2" x 1"	24B-1	60	30	13.0	1.27	2000	221 110 023	○
1 3/4" x 31mm	28B-1	65	30	16.0	1.24	2000	221 110 024	○
2" x 31mm	32B-1	70	30	16.0	1.34	2000	221 110 025	○

All chain guides are available in Original Material "S"<sup>®</sup> green or Material "S" 1000<sup>®</sup>.

Please order as follows:

Example:

Chain guide in Original Material "S"<sup>®</sup> green

Part no.: 221 110 012

Chain guide in Material "S" 1000<sup>®</sup> green

Part no.: 221 120 012

Chain guides suitable for external shackle-type connector only.

Special sizes/designs, other technical or high-performance materials on request.

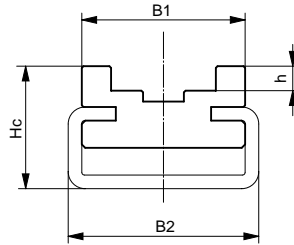
Special profiles, see pp 143–145.

Intermediate sizes available at short notice and charged at full meter prices. Tolerances at cross-section of profile to DIN2768, tolerance class m. Properties of materials, see pg 14.

- ex stock
- at short notice on request

# Type CU (Original Material "S"<sup>®</sup>green)

## Chain Guides with Steel C-Profile for Roller Chains to **DIN8187**



Chain size in inches	Chain size DIN8187	C-profile type	B <sub>1</sub> mm	B <sub>2</sub> mm	H <sub>c</sub> mm	h mm	Weight kg/m	Length chain guide (tolerance +0/+7) mm	Length steel C-profile (tolerance +0/+40) mm	Part no. with steel C-profile, galvanized	Availability
3/8" x 5/32"	–	C3	20	20	17	2.8	0.75	2000	2000 6000	221 310 211 221 310 311	● ●
3/8" x 7/32"	06B-1	C3	20	20	17	2.8	0.75	2000	2000 6000	221 310 213 221 310 313	○ ○
1/2" x 3/16"	083-1	C3	20	20	17	2.3	0.74	2000	2000 6000	221 310 215 221 310 315	● ●
1/2" x 1/4"	085-1	C5	28	28	18	3.2	1.11	2000	2000 6000	221 310 217 221 310 317	○ ○
1/2" x 1/4" g=12,8mm	–	C5	28	28	18	3.5	1.17	2000	2000 6000	221 310 219 221 310 319	○ ○
1/2" x 5/16"	08B-1	C1	20	24	11	3.5	0.42	2000	2000 6000	221 310 212 221 310 312	● ●
5/8" x 1/4"	–	C5	24	28	18	3.6	1.16	2000	2000 6000	221 310 221 221 310 321	● ●
5/8" x 3/8"	10B-1	C5	24	28	18	3.6	1.13	2000	2000 6000	221 310 214 221 310 314	● ●
3/4" x 7/16"	12B-1	C5	24	28	18	3.9	1.13	2000	2000 6000	221 310 216 221 310 316	● ●
1" x 17mm	16B-1	C9	33	38	30	8.4	2.26	2000	2000 6000	221 310 218 221 310 318	● ●
1 1/4" x 3/4"	20B-1	C12	60	60	35	10.0	3.21	2000	2000 6000	221 310 220 221 310 320	● ●
1 1/2" x 1"	24B-1	C12	60	60	40	13.0	3.51	2000	2000 6000	221 310 222 221 310 322	● ●
1 3/4" x 31mm	28B-1	C12	65	60	45	16.0	4.01	2000	2000 6000	221 310 223 221 310 323	○ ○
2" x 31mm	32B-1	C12	70	60	45	16.0	4.21	2000	2000 6000	221 310 224 221 310 324	○ ○

All chain guides are available in Original Material "S"<sup>®</sup>green or Material "S" 1000<sup>®</sup>.  
Please order as follows:

Example:

Chain guide in Original Material "S"<sup>®</sup>green  
green with steel C-profile, galvanized  
Part no.: 221 310 211

Chain guide in Material "S" 1000<sup>®</sup>green  
green with steel C-profile, galvanized  
Part no.: 221 320 211

Special sizes/designs, other technical or high-performance materials on request.

Steel C-profile in stainless steel (V2A) also available ex stock.

Chain guides also available without steel C-profile.  
Special profiles, see pp 143–145.

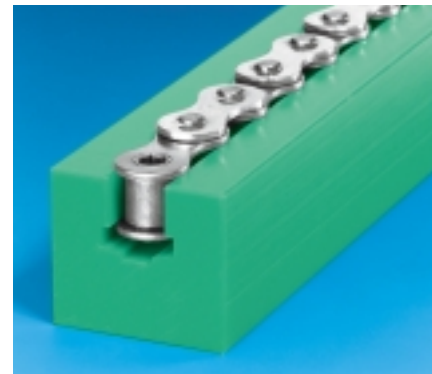
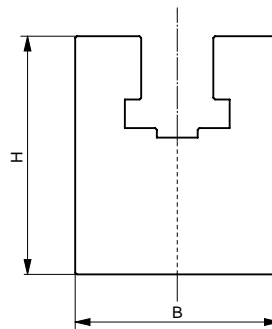
Intermediate sizes available at short notice and charged at full meter prices. Tolerances at cross-section of plastic profile to DIN2768, tolerance class m. Tolerances and sizes of steel C-profiles, see pp 135–136.

Properties of materials, see pg 14.

- ex stock
- at short notice on request

# Type K (Original Material "S"<sup>®</sup>green)

## Chain Guides for Roller Chains to **DIN8187**



Chain size in inches	Chain size DIN8187	B mm	H mm	Weight kg/m	Length (tolerance +0/+7) mm	Part no.	Availability
3/8" x 5/32"	–	20	25	0.43	2000	221 110 026	●
3/8" x 7/32"	06B-1	20	25	0.43	2000	221 110 027	●
1/2" x 3/16"	083-1	20	25	0.42	2000	221 110 028	○
1/2" x 1/4"	085-1	24	30	0.55	2000	221 110 029	○
1/2" x 1/4" * g=12,8mm	–	24	30	0.55	2000	221 110 030	○
1/2" x 5/16"	08B-1	24	30	0.55	2000	221 110 031	●
5/8" x 1/4"	–	30	30	0.73	2000	221 110 032	●
5/8" x 3/8"	10B-1	30	35	0.83	2000	221 110 033	●
3/4" x 7/16"	12B-1	40	35	1.10	2000	221 110 034	●
1" x 17mm	16B-1	40	45	1.22	2000	221 110 035	●
1 1/4" x 3/4"	20B-1	50	50	1.76	2000	221 110 036	●
1 1/2" x 1"	24B-1	60	60	2.35	2000	221 110 037	●
1 3/4" x 31mm	28B-1	60	70	2.52	2000	221 110 038	●
2" x 31mm	32B-1	70	75	3.35	2000	221 110 039	○

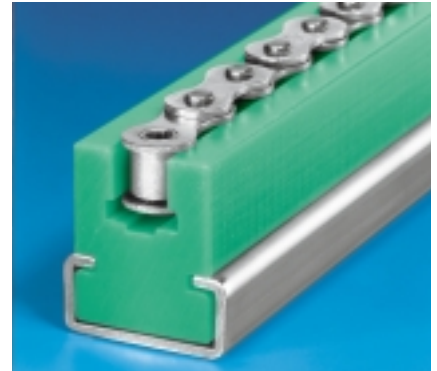
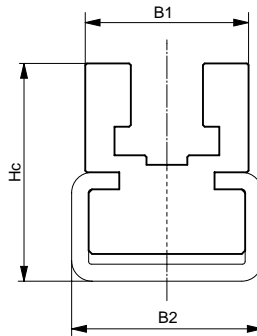
All chain guides are available in Original Material "S"<sup>®</sup>green or Material "S" 1000<sup>®</sup>. Please order as follows:  
 Example:  
 Chain guide in Original Material "S"<sup>®</sup>green  
 Part no.: 221 110 026  
 Chain guide in Material "S" 1000<sup>®</sup>green  
 Part no.: 221 120 026

Chain guides suitable for external shackle-type connector only. Two-part design available on request. Special sizes/designs, other technical or high-performance materials on request. Special profiles, see pp 143–145. Intermediate sizes available at short notice and charged at full meter prices. Tolerances at cross-section of profile to DIN2768, tolerance class m. Properties of materials, see pg 14.

- ex stock
- at short notice on request

# Type CK (Original Material "S"<sup>®</sup>green)

## Chain Guides with Steel C-Profile for Roller Chains to **DIN8187**



Chain size in inches	Chain size DIN8187	C-profile type	B <sub>1</sub> mm	B <sub>2</sub> mm	H <sub>c</sub> mm	Weight kg/m	Length chain guide (tolerance +0/+7) mm	Length steel C-profile (tolerance +0/+40) mm	Part no. with steel C-profile, galvanized	Availability
3/8" x 5/32"	–	C3	20	20	21	0.92	2000	2000 6000	221 310 225 221 310 325	● ●
3/8" x 2/32"	06B-1	C3	20	20	21	0.92	2000	2000 6000	221 310 226 221 310 326	● ●
1/2" x 3/16"	083-1	C3	20	20	21	0.92	2000	2000 6000	221 310 227 221 310 327	○ ○
1/2" x 1/4"	085-1	C7	24	28	32	1.76	2000	2000 6000	221 310 228 221 310 328	○ ○
1/2" x 1/4" g=12,8mm	–	C7	24	28	32	1.76	2000	2000 6000	221 310 229 221 310 329	○ ○
1/2" x 5/16"	08B-1	C7	24	28	32	1.76	2000	2000 6000	221 310 230 221 310 330	● ●
5/8" x 1/4"	–	C7	24	28	32	1.69	2000	2000 6000	221 310 231 221 310 331	○ ○
5/8" x 3/8"	10B-1	C7	24	28	32	1.69	2000	2000 6000	221 310 232 221 310 332	● ●
3/4" x 7/16"	12B-1	C9	32	38	43	2.86	2000	2000 6000	221 310 233 221 310 333	● ●
1" x 17mm	16B-1	C9	40	38	50	2.70	2000	2000 6000	221 310 234 221 310 334	● ●
1 1/4" x 3/4"	20B-1	C12	60	60	55	4.81	2000	2000 6000	221 310 235 221 310 335	○ ○
1 1/2" x 1"	24B-1	C12	60	60	65	5.01	2000	2000 6000	221 310 236 221 310 336	○ ○
1 3/4" x 31mm	28B-1	C12	70	60	80	6.21	2000	2000 6000	221 310 237 221 310 337	○ ○
2" x 31mm	32B-1	C12	70	60	80	6.21	2000	2000 6000	221 310 238 221 310 338	○ ○

All chain guides are available in Original Material "S"<sup>®</sup>green or Material "S" 1000<sup>®</sup>.

Please order as follows:

Example:

Chain guide in Original Material "S"<sup>®</sup>green

with steel C-profile, galvanized

Part no.: 221 310 225

Chain guide in Material "S" 1000<sup>®</sup>green

with steel C-profile, galvanized

Part no.: 221 320 225

Chain guides suitable for external shackle-type connector only. Two-part design available on request.

Special sizes/designs, other technical or high-performance materials on request.

Steel C-profile in stainless steel (V2A) also available ex stock.

Chain guides also available without steel C-profile.

Special profiles, see pp 143-145.

Intermediate sizes available at short notice and charged at full meter prices. Tolerances at cross-section of plastic profile to DIN2768,

tolerance class m.

Tolerances and sizes of steel C-profiles,

see pp 135-136.

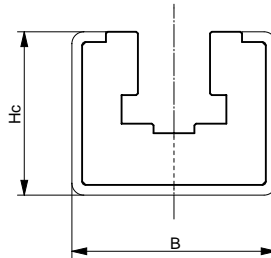
Properties of materials, see pg 14.

● ex stock

○ at short notice on request

# Type CKG (Original Material "S"<sup>®</sup>green)

DIN8187



Chain size in inches	Chain size DIN8187	C-profile type	B mm	Hc mm	Weight kg/m	Length chain guide (tolerance +0/+7) mm	Length steel C-profile (tolerance +0/+40) mm	Part no. with steel C-profile, galvanized	Availability
3/8" x 5/32"	–	C10	30	24	1.47	2000	2000 6000	221 410 201 221 410 301	● ●
3/8" x 7/32"	06B-1	C10	30	24	1.30	2000	2000 6000	221 410 202 221 410 302	● ●
1/2" x 3/16"	083-1	C10	30	24	1.30	2000	2000 6000	221 410 203 221 410 303	● ●
1/2" x 1/4"	085-1	C10	30	24	1.30	2000	2000 6000	221 410 220 221 410 320	● ●
1/2" x 1/4" g=12,8mm	–	C10	30	24	1.30	2000	2000 6000	221 410 221 221 410 321	○ ○
1/2" x 5/16"	08B-1	C10	30	24	1.30	2000	2000 6000	221 410 204 221 410 304	● ●
5/8" x 1/4"	–	C10	30	24	1.30	2000	2000 6000	221 410 222 221 410 322	● ●
5/8" x 3/8"	10B-1	C10	30	24	1.30	2000	2000 6000	221 410 205 221 410 305	● ●
3/4" x 7/16"	12B-1	C10	30	24	1.30	2000	2000 6000	221 410 206 221 410 306	● ●
1" x 17mm	16B-1	C11	45	40	3.18	2000	2000 6000	221 410 207 221 410 307	● ●
1 1/4" x 3/4"	20B-1	C11	45	40	3.07	2000	2000 6000	221 410 208 221 410 308	● ●
1 1/2" x 1"	24B-1	C13	65	55	6.26	2000	2000 6000	221 410 209 221 410 309	● ●
1 3/4" x 31mm	28B-1	C13	65	55	5.86	2000	2000 6000	221 410 210 221 410 310	● ●
2" x 31mm	32B-1	C13	65	55	5.76	2000	2000 6000	221 410 211 221 410 311	● ●

All chain guides are available in Original Material "S"<sup>®</sup>green or Material "S" 1000<sup>®</sup>.

Please order as follows:

Example:

Chain guide in Original Material "S"<sup>®</sup> green with steel C-profile, galvanized  
Part no.: 221 410 201

Chain guide in Material "S" 1000<sup>®</sup> green with steel C-profile, galvanized  
Part no.: 221 420 201

Chain guides suitable for external shackle-type connector only. Two-part design available on request. Special sizes/designs, other technical or high-performance materials on request.

Steel C-profile in stainless steel (V2A) also available ex stock.

Chain guides also available without steel C-profile. Special profiles, see pp 143–145.

Intermediate sizes available at short notice and charged at full meter prices.

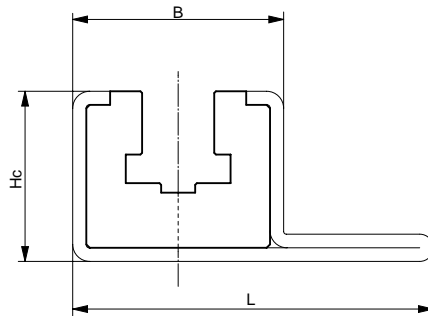
Tolerances at cross-section of plastic profile to DIN 2768, tolerance class m. Tolerances and sizes of steel C-profiles, see pp 135–136. Properties of materials, see pg 14.

- ex stock
- at short notice on request



## Type CKG 15 V (Original Material "S"<sup>®</sup>green)

Chain Guides with  
Steel C-Profile  
for Roller Chains  
to **DIN8187**



Chain size in inches	Chain size DIN8187	C-profile type	B mm	H <sub>c</sub> mm	L mm	Weight kg/m	Length chain guide (tolerance +0/+7) mm	Length steel C-profile (tolerance +0/+40) mm	Part no. with steel C-profile, galvanized	Availability
3/8" x 5/32"	–	C15 V	31	25	53	2.34	2000	2000 6000	221 410 228 221 410 328	● ●
3/8" x 7/32"	06B-1	C15 V	31	25	53	2.34	2000	2000 6000	221 410 216 221 410 316	● ●
1/2" x 3/16"	083-1	C15 V	31	25	53	2.30	2000	2000 6000	221 410 229 221 410 329	● ●
1/2" x 1/4"	085-1	C15 V	31	25	53	2.30	2000	2000 6000	221 410 230 221 410 330	● ●
1/2" x 5/16"	08B-1	C15 V	31	25	53	2.30	2000	2000 6000	221 410 217 221 410 317	● ●
5/8" x 1/4"	–	C15 V	31	25	53	2.25	2000	2000 6000	221 410 232 221 410 332	● ●
5/8" x 3/8"	10B-1	C15 V	31	25	53	2.25	2000	2000 6000	221 410 218 221 410 318	● ●
3/4" x 7/16"	12B-1	C15 V	31	25	53	2.25	2000	2000 6000	221 410 219 221 410 319	● ●

All chain guides are available in Original Material "S"<sup>®</sup>green or Material "S" 1000<sup>®</sup>. Please order as follows:

Example:

Chain guide in Original Material "S"<sup>®</sup>green with steel C-profile, galvanized  
Part no.: 221 410 228

Chain guide in Material "S" 1000<sup>®</sup> green with steel C-profile, galvanized  
Part no.: 221 420 228

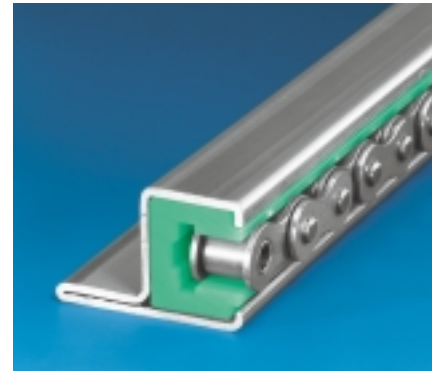
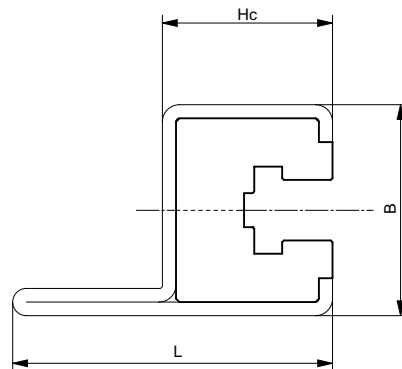
Chain guides suitable for external shackle-type connector only. Two-part design available on request. Special sizes/designs, other technical or high-performance materials on request. Steel C-profile in stainless steel (V2A) also available ex stock. Chain guides also available without steel C-profile. Special profiles, see pp 143–145.

Intermediate sizes available at short notice and charged at full meter prices. Tolerances at cross-section of plastic profile to DIN2768, tolerance class m. Tolerances and sizes of steel C-profiles, see pp 135–136. Properties of materials, see pg 14.

- ex stock
- at short notice on request

# Type CKG 14 H (Original Material "S"<sup>®</sup>green)

## Chain Guides with Steel C-Profile for Roller Chains to **DIN8187**



3/8" x 5/32"	–	C14H	31	25	47	2.30	2000	2000 6000	221 410 223 221 410 323	● ●	
3/8" x 7/32"	06B-1	C14H	31	25	47	2.29	2000	2000 6000	221 410 212 221 410 312	● ●	
1/2" x 3/16"	083-1	C14H	31	25	47	2.29	2000	2000 6000	221 410 224 221 410 324	● ●	
1/2" x 1/4"	085-1	C14H	31	25	47	2.29	2000	2000 6000	221 410 225 221 410 325	● ●	
1/2" x 5/16"	08B-1	C14H	31	25	47	2.29	2000	2000 6000	221 410 213 221 410 313	● ●	
5/8" x 1/4"	–	C14H	31	25	47	2.24	2000	2000 6000	221 410 227 221 410 327	● ●	
5/8" x 3/8"	10B-1	C14H	31	25	47	2.24	2000	2000 6000	221 410 214 221 410 314	● ●	
3/4" x 7/16"	12B-1	C14H	31	25	47	2.20	2000	2000 6000	221 410 215 221 410 315	● ●	

All chain guides are available in Original Material "S"<sup>®</sup> green or Material "S" 1000<sup>®</sup>.

Please order as follows:

Example:

Chain guide in Original Material "S"<sup>®</sup> green with steel C-profile, galvanized

Part no.: 221 410 223

Chain guide in Material "S" 1000<sup>®</sup> green

with steel C-profile, galvanized

Part no.: 221 420 223

Chain guides suitable for external shackle-type connector only. Two-part design available on request.

Special sizes/designs, other technical or high-performance materials on request.

Steel C-profile in stainless steel (V2A) also available ex stock.

Chain guides also available without steel C-profile.

Special profiles, see pp 143–145.

Intermediate sizes available at short notice and charged at full meter prices. Tolerances at cross-section of plastic profile to DIN2768, tolerance class m.

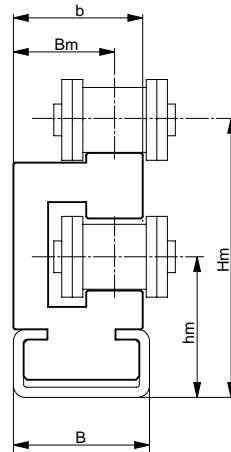
Tolerances and sizes of steel C-profiles, see pp 135–136.

Properties of materials, see pg 14.

- ex stock
- at short notice on request

# Type ETA (Original Material "S"<sup>®</sup>green)

## Double-Decker Chain Guides with Steel C-Profile for Roller Chains to **DIN8187**



Chain size in inches	Chain size DIN8187	C-profile type	B mm	Hm mm	b mm	Bm mm	hm mm	Weight kg/m	Length chain guide (tolerance +0/+7) mm	Length steel C-profile (tolerance +0/+40) mm	Part no.	Availability
3/8" x 7/32"	06B-1	C3	20	30.2	17	14.5	17	0.90	2000	2000 6000	221 310 239 221 310 339	● ●
1/2" x 5/16"	08B-1	C3	20	33.8	20	16.5	18	0.97	2000	2000 6000	221 310 240 221 310 340	● ●
5/8" x 3/8"	10B-1	C3	20	41.1	20	15.5	21	1.13	2000	2000 6000	221 310 241 221 310 341	● ●
3/4" x 7/16"	12B-1	C5	28	46.5	24	18.5	24	1.72	2000	2000 6000	221 310 242 221 310 342	● ●
1" x 17 mm	16B-1	C9	38	62.0	33	25.0	34	3.17	2000	2000 6000	221 310 243 221 310 343	● ●

All chain guides are available in Original Material "S"<sup>®</sup>green or Material "S" 1000<sup>®</sup>. Please order as follows:  
 Example:  
 Chain guide in Original Material "S"<sup>®</sup>green with steel C-profile, galvanized  
 Part no.: 221 310 239  
 Chain guide in Material "S" 1000<sup>®</sup>green with steel C-profile, galvanized  
 Part no.: 221 320 239

Special sizes/designs, other technical or high-performance materials on request.  
 Steel C-profile in stainless steel (V2A) also available ex stock.  
 Chain guides also available without steel C-profile.  
 Special profiles, see pp 143–145.

Intermediate sizes available at short notice and charged at full meter prices. Tolerances at cross-section of plastic profile to DIN2768, tolerance class m.  
 Tolerances and sizes of steel C-profiles, see pp 135–136.  
 Properties of materials, see pg 14.

- ex stock
- at short notice on request