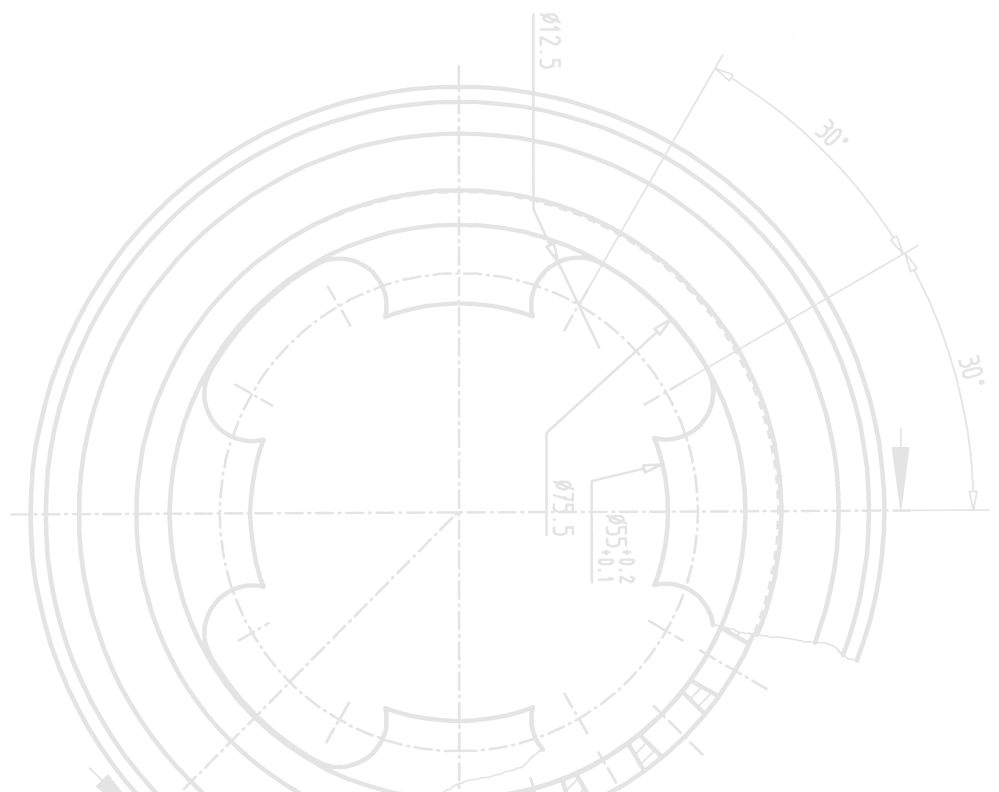
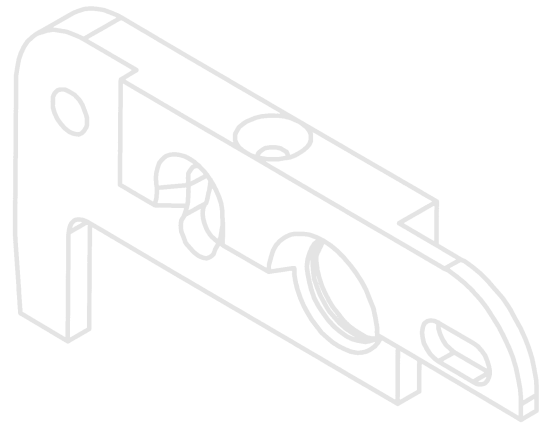
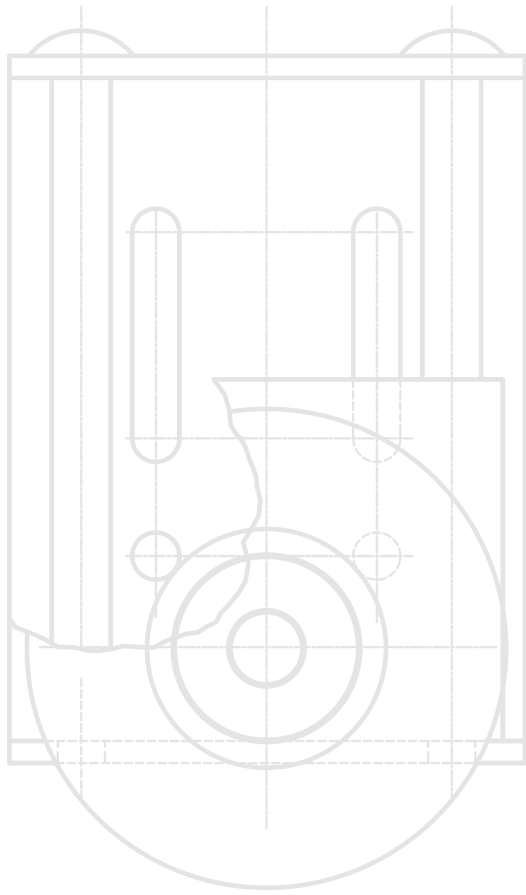


Products for Flat-Top Chains



## Products for Flat-Top Chains

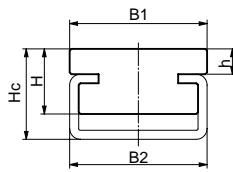
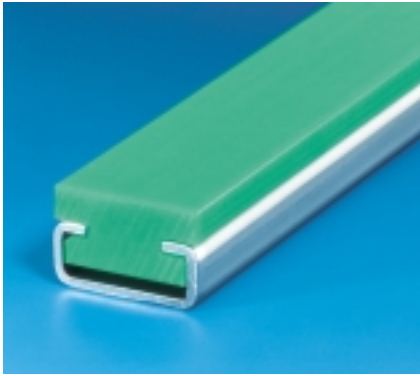
Murtfeldt's developments of special products for conveyor systems, for materials to slide smoothly on conveyor lines and for general support and lateral control in materials handling have benefited a wide variety of applications.

Today's automated production processes demand innovative solutions even for small runs.

Murtfeldt meets that demand and thus contributes to the trouble-free running of your installation.



# Slide Rails Type CF (Original Material "S"<sup>®</sup> green)



Universal slide rail for use in lateral, upper and lower applications for guiding products and conveyors.

Type	C-profile type	B <sub>1</sub> mm	B <sub>2</sub> mm	H mm	H <sub>c</sub> mm	h mm	Weight kg/m	Length chain guide (tolerance +0/+7) mm	Length steel C-profile (tolerance +0/+40) mm	Part no.	Availability
CF	C1	20	24	5	6	1.0	0.350	2000	2000 6000	211 010 201 211 010 301	● ●
CF	C1	20	24	10	11	5.8	0.450	2000	2000 6000	211 010 202 211 010 302	● ●
CF	C3	20	20	10	14	4.0	0.790	2000	2000 6000	211 010 203 211 010 303	● ●
CF	C3	20	20	14	17	7.0	0.880	2000	2000 6000	211 010 204 211 010 304	● ●
CF	C3	20	20	16	20	10.0	0.940	2000	2000 6000	211 010 205 211 010 305	● ●
CF	C5	28	28	10	15	3.0	1.180	2000	2000 6000	211 010 206 211 010 306	● ●
CF	C5	28	28	14	18	6.0	1.320	2000	2000 6000	211 010 207 211 010 307	● ●
CF	C9	38	38	12	22	4.0	2.200	2000	2000 6000	211 010 208 211 010 308	● ●
CF	C9	38	38	18	25	7.0	2.500	2000	2000 6000	211 010 209 211 010 309	● ●
CF	C12	60	60	20	30	10.0	3.300	2000	2000 6000	211 010 210 211 010 310	● ●

All slide rails are available in Original Material "S"<sup>®</sup> green or Material "S"<sup>®</sup> 1000.  
Please order as follows:  
Example:  
Slide rails in Original Material "S"<sup>®</sup>, green with steel C-profile, galvanized  
Part no.: 211 010 201  
Slide rails in Material "S"<sup>®</sup> 1000<sup>®</sup>, green with steel C-profile, galvanized  
Part no.: 211 020 201  
Special sizes/designs, other technical or high-performance materials on request.

Steel C-profile in stainless steel (V2A) also available ex stock.  
Slide rails also available without steel C-profile.  
Special profiles, see pp 143–145.  
Intermediate sizes available at short notice and charged at full meter prices. Tolerances at cross-section of plastic profile to DIN2768, tolerance class m. Tolerances and sizes of steel C-profiles, see pp 135–136. Properties of materials, see pg 14.

- ex stock
- at short notice on request

# Tapes and Profiles for Flat-Top Chains

## (Original Material "S"<sup>®</sup>)

### milled/extruded



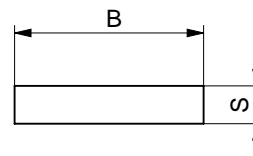
Wherever goods and materials need to be handled carefully and with low driving forces, plastic tapes made from Original Material "S"<sup>®</sup> green are used, especially in the beverage, packaging, food and frozen food industries.

These tapes are also available in Original Material "S"<sup>®</sup> black antistatic; both versions come in milled or extruded qualities as standard. Tapes milled from the solid are particularly wear resistant and offer high notched bar impact strength.

Our standard range comes in thicknesses of 3, 4 and 5mm and in lengths of 50, 65 and 80m. Extruded tapes in overlengths are available on request. Thicknesses of 6, 8 and 10mm can be made to widths of between 10 and 60mm.

Intermediate and special sizes to your specification are available on request, as are pretreated tapes (scraped or flamed on one side) for subsequent bonding.

If you would like to know more about the production processes of both tapes and their specific differences, please contact us – we will be pleased to assist you further.



### Tapes made from Original Material "S"<sup>®</sup>

Width (B) x Thickness (S)	Length of roll m	Part no.
15 x 3	80	171 010 007
18 x 3	80	171 010 008
20 x 3	80	171 101 009
22 x 3	80	171 101 010
25 x 3	80	171 101 011
30 x 3	80	171 101 012
35 x 3	80	171 101 013
40 x 3	80	171 101 014
45 x 3	80	171 101 016
50 x 3	80	171 101 017
60 x 3	80	171 101 019
70 x 3	80	171 101 020
80 x 3	80	171 101 021
90 x 3	80	171 101 023
100 x 3	80	171 101 024
111 x 3	80	171 101 025

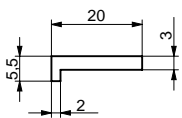
Width (B) x Thickness (S)	Length of roll m	Part no.
20 x 4	65	171 010 026
25 x 4	65	171 010 027
30 x 4	65	171 010 028
40 x 4	65	171 010 030
50 x 4	65	171 010 032

Width (B) x Thickness (S)	Length of roll m	Part no.
15 x 5	50	171 010 034
18 x 5	50	171 010 035
20 x 5	50	171 010 036
22 x 5	50	171 010 037
25 x 5	50	171 010 038
30 x 5	50	171 010 039
35 x 5	50	171 010 040
40 x 5	50	171 010 041
45 x 5	50	171 010 042
50 x 5	50	171 010 043
60 x 5	50	171 010 044

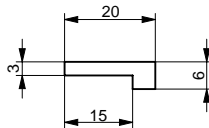
# Profiles for Flat-Top Chains (Original Material "S"<sup>®</sup>)

milled/extruded

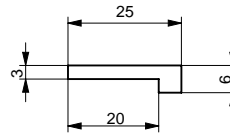
**L-profile 20 x 5.5**



**L-profile 20 x 6**



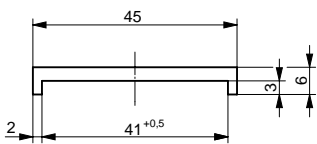
**L-profile 25 x 6**



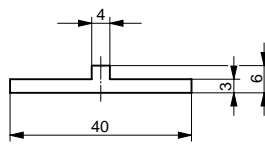
Profile	Length of roll/profile m	Type	Original Material "S" <sup>®</sup>	Part no. (milled)	Part no. (extruded)	Availability
L-profile 20 x 5.5	35	milled	green	211 310 034	211 310 044	●
	50	extruded				
L-profile 20 x 6	45	milled	green	211 310 035	–	●
L-profile 25 x 6	45	milled	green	211 310 036	–	●

- ex stock
- at short notice on request

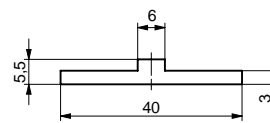
**U-profile 45 x 6**



**T-profile 40 x 6**

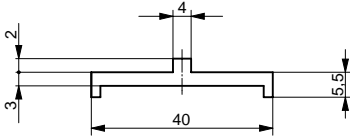
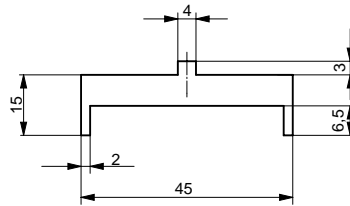
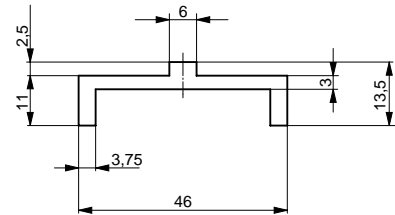


**T-profile 40 x 5.5**



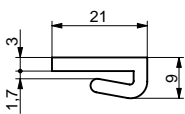
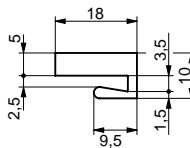
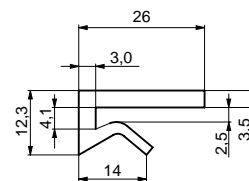
Profile	Length of roll/profile m	Type	Original Material "S" <sup>®</sup>	Part no. (milled)	Part no. (extruded)	Availability
U-profile 45 x 6	35	milled	green	211310037	–	●
T-profile 40 x 6	35	milled	green	211310033	211310042	●
	50	extruded				
T-profile 40 x 5.5	50	extruded	green	–	211310001	●

Tolerances according to DIN2768 or DIN16942, tolerance class g. Intermediate sizes available at short notice and charged at full meter prices. ● ex stock  
 Extruded profiles made from Original Material "S"<sup>®</sup> black are not antistatic. ○ at short notice on request

**Bridge-centre-profile 40 x 7.5****Bridge-centre-profile 45 x 18****Bridge-centre-profile 46 x 13.5**

Profile	Length of roll/profile m	Type	Original Material "S" <sup>®</sup>	Part no. (milled)	Part no. (extruded)	Availability
Bridge-centre profile 40 x 7.5	50	extruded	green	–	211 310 043	●
Bridge-centre profile 45 x 18	6	extruded	green	–	211 310 002	●
Bridge-centre profile 46 x 13.5	6	extruded	green	–	211 310 003	●

- ex stock
- at short notice on request

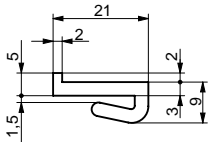
**Clamp-on flat profile 21 x 9****Clamp-on flat profile 18 x 10****Clamp-on flat profile 26 x 12.3**

Profile	Length of roll/profile m	Type	Original Material "S" <sup>®</sup>	Part no. (milled)	Part no. (extruded)	Availability
Clamp-on flat profile 21 x 9	50	extruded	green	–	211 310 004	●
Clamp-on flat profile 18 x 10	50	extruded	black	–	211 310 006	●
Clamp-on flat profile 26 x 12.3	30	extruded	natural	–	211 310 039	●

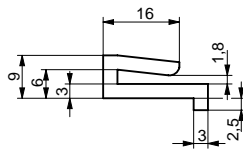
Tolerances according to DIN2768 or DIN16942, tolerance class g. Intermediate sizes available at short notice and charged at full meter prices. Extruded profiles made from Original Material "S"<sup>®</sup> black are **not** antistatic.

- ex stock
- at short notice on request

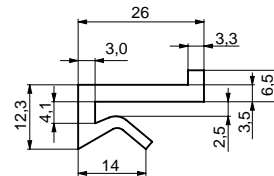
**Clamp-on L-profile 21 x 11**



**Clamp-on L-profile 16 x 11.5**



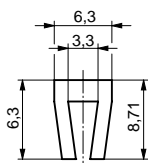
**Clamp-on L-profile 26 x 12.3**



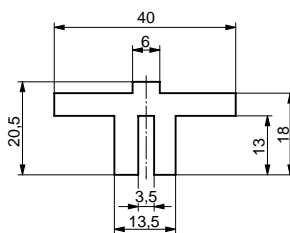
Tape profile	Length of roll/profile m	Type	Original Material "S" <sup>®</sup>	Part no. (milled)	Part no. (extruded)	Availability
Clamp-on L-profile 21 x 11	50	extruded	green	–	211 310 005	●
Clamp-on L-profile 16 x 11.5	65	extruded	green	–	211 310 041	●
Clamp-on L-profile 26 x 12.3	30	extruded	natural	–	211 310 040	●

- ex stock
- at short notice on request

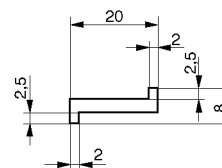
**Clamp-on U-profile 8.7 x 6.3**



**Push-on T-profile 40 x 20.5**



**Z-profile 20 x 8**



Tape profile	Length of roll/profile m	Type	Original Material "S" <sup>®</sup>	Part no. (milled)	Part no. (extruded)	Availability
Clamp-on U-profile 8.7 x 6.3	50	extruded	natural	–	211 310 007	●
Push-on T-profile 40 x 20.5	2	milled	green	211 310 030	–	●
Z-profile 20 x 8	35 50	milled extruded	green	211 310 031	211 310 038	●

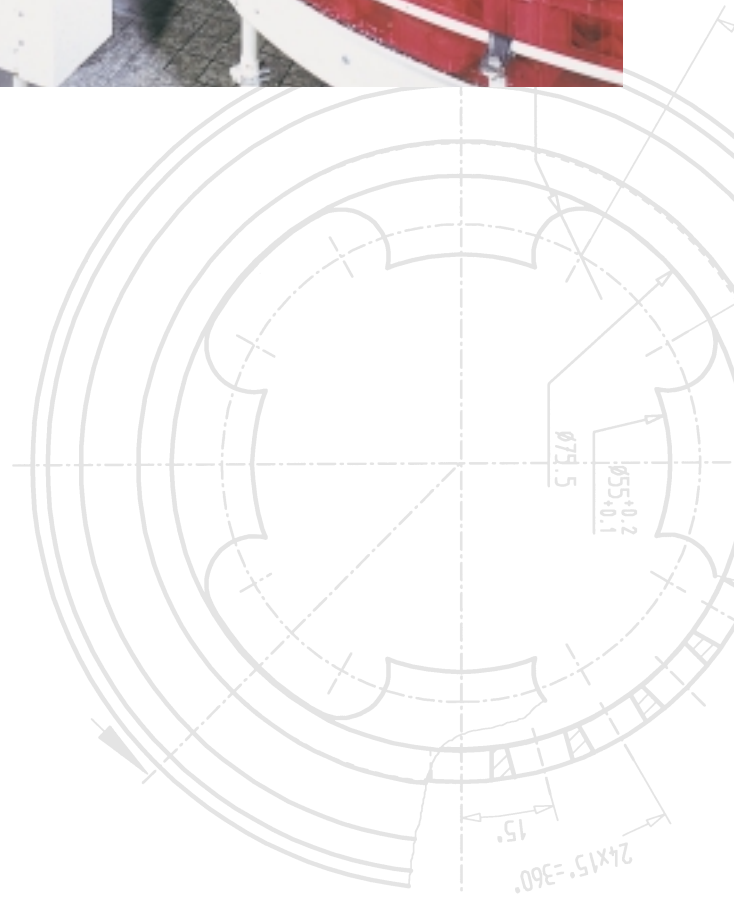
Tolerances according to DIN2768 or DIN16942, tolerance class g. Intermediate sizes available at short notice and charged at full meter prices. ● ex stock  
 Extruded profiles made from Original Material "S"<sup>®</sup> black are not antistatic. ○ at short notice on request



## Guide Rails (Original Material "S"®) milled/extruded

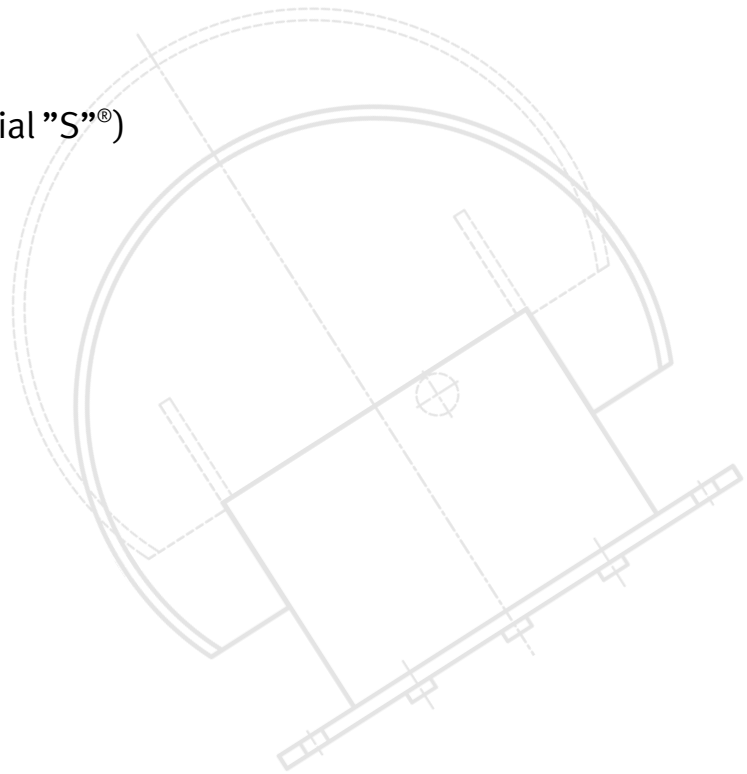
Original Material "S"® shows particularly good slide properties and high abrasion resistance, making it an excellent material for guide rails. Our standard range includes a wide variety either extruded or milled from the solid, both available ex stock. Milled guide rails offer higher wear resistance and toughness, so they tolerate higher loads and last longer.

Should you fail to find a suitable design or size in our standard range, we will be glad to offer you low-cost custom guide rails made to your own specification. Please ask us for a quotation.

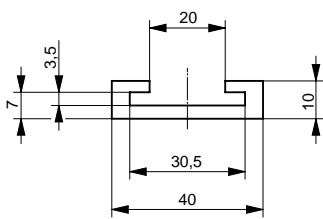


# Clip-on Profiles (Original Material "S"®)

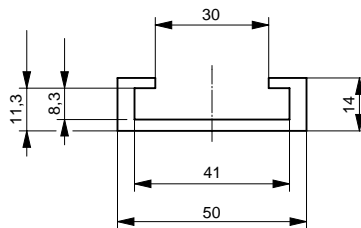
milled/extruded



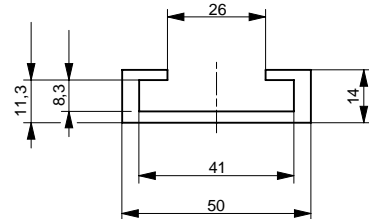
**for flat bar 30 x 3  
milled/extruded**



**for flat bar 40 x 8  
milled**



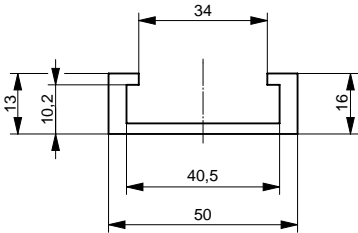
**for flat bar 40 x 8  
extruded**



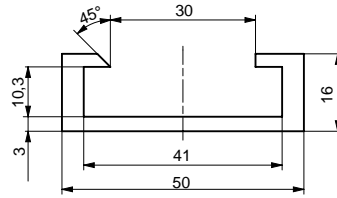
Profile of guide rail	Length m	Type	Original Material "S"®	Part no. milled	Part no. extruded	Avail- ability
plastic C-profile for flat bar 30 x 3	2	milled	green	211 310 016	–	●
	2	milled	black antistatic	211 310 020	–	●
plastic C-profile for flat bar 30 x 3	2	extruded	green	–	211 310 024	●
plastic C-profile for flat bar 40 x 8	2	milled	green	211 310 014	–	●
	2	milled	black antistatic	211 310 018	–	●
plastic C-profile for flat bar 40 x 8	3	extruded	black	–	211 310 025	●

Tolerances according to DIN2768 or DIN16942, tolerance class g. Intermediate sizes available at short notice and charged at full meter prices. ● ex stock  
 Extruded profiles made from Original Material "S"® black are not antistatic. ○ at short notice on request

**for flat bar 40 x 10  
milled**



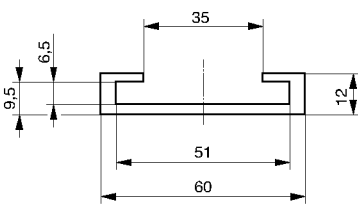
**for flat bar 40 x 10  
extruded**



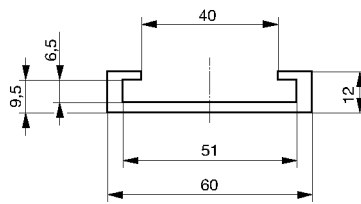
Profile of guide rail	Length m	Type	Original Material" S" <sup>®</sup>	Part no. milled	Part no. extruded	Avail- ability
plastic C-profile for flat bar 40 x 10	2	milled	green	211 310 022	–	●
	2	milled	black antistatic	211 310 023	–	●
plastic C-profile for flat bar 40 x 10	2	extruded	black	–	211 310 021	●

- ex stock
- at short notice on request

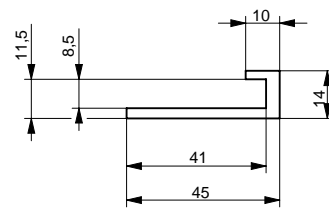
**for flat bar 50 x 6  
milled**



**for flat bar 50 x 6  
extruded**



**plastic L-profile  
for flat bar 40 x 8  
milled**



Profile of guide rail	Length m	Type	Original Material" S" <sup>®</sup>	Part no. milled	Part no. extruded	Avail- ability
plastic C-profile for flat bar 50 x 6	2	milled	green	211 310 013	–	●
	2	milled	black antistatic	211 310 017	–	●
plastic C-profile for flat bar 50 x 6	3	extruded	natural	–	211 310 026	●
plastic L-profile for flat bar 40 x 8	2	milled	green	211 310 015	–	●
	2	milled	black antistatic	211 310 019	–	●

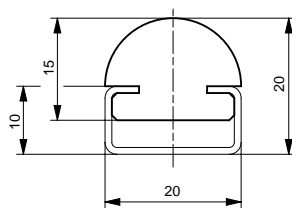
Tolerances according to DIN2768 or DIN16942, tolerance class g. Intermediate sizes available at short notice and charged at full meter prices. ● ex stock  
○ at short notice on request  
Extruded profiles made from Original Material "S"<sup>®</sup> black are not antistatic.

# Guide Rails as Slide-in and Snap-on Profiles

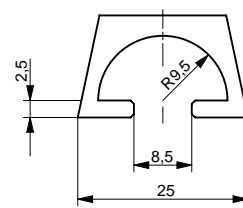
(Original Material "S"<sup>®</sup>)  
milled/extruded



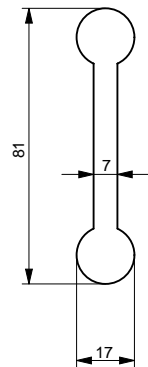
**Mushroom-profile HR 2020**



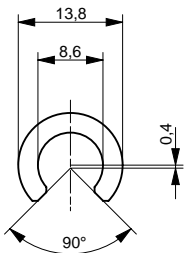
**C-trapeze**



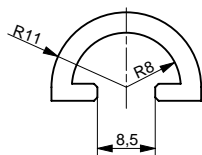
**Bone-profile**



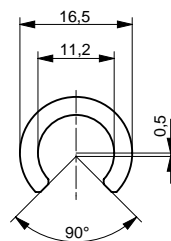
**Snap-on 9.5**



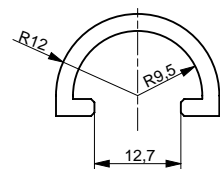
**Snap-on 10**



**Snap-on 12**



**Snap-on 12.5**



Profile of guide rail	Length of profile m	Type	Original Material "S" <sup>®</sup>	Part no.	Availability
<b>Mushroom-profile HR 2020</b>	2	milled	green	211 210 301*	●
	2	milled	black antistatic	211 210 302*	●
	6	extruded	green	211 210 303*	●
<b>C-trapeze</b>	2	extruded	natural	211 316 049	●
<b>Bone-profile</b>	6	extruded	green	211 310 028	●
			black	211 310 027	●
<b>Snap-on 9.5</b>	50	extruded	natural	211 310 045	●
<b>Snap-on 12</b>	50	extruded	natural	211 310 046	●
<b>Snap-on 10</b>	50	extruded	natural	211 310 047	●
<b>Snap-on 12.5</b>	50	extruded	natural	211 310 048	●

\*with galvanized steel C-profile

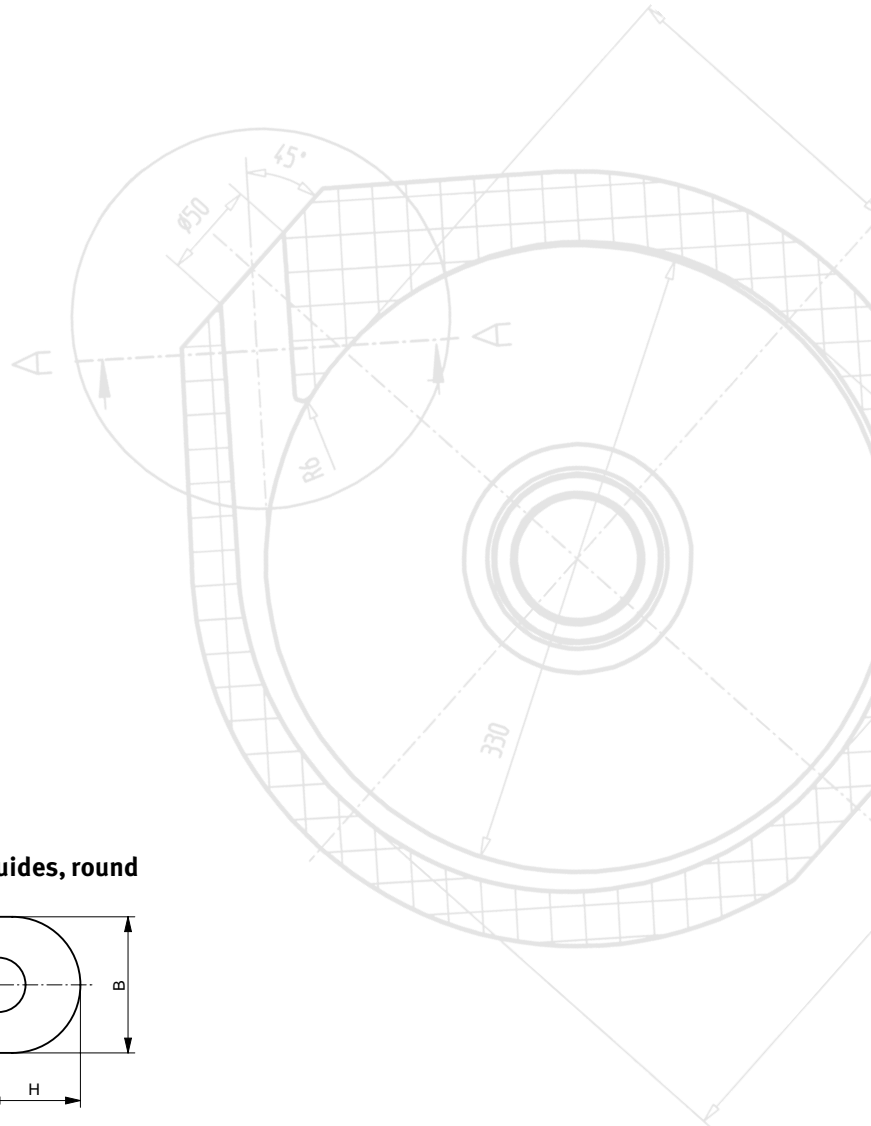
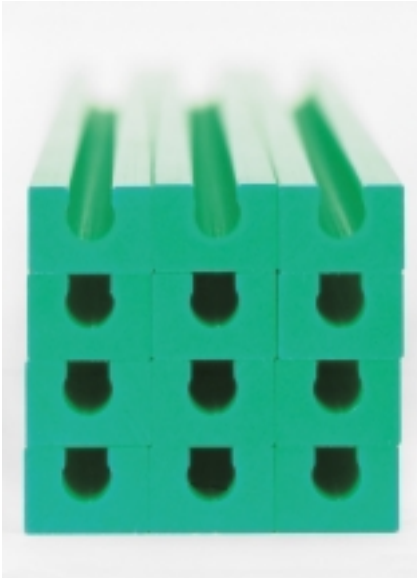
Tolerances according to DIN2768 or DIN16942, tolerance class g. Tolerances and dimensions of steel C-profiles, see pp 135-136.

Intermediate sizes available at short notice and charged at full meter prices.

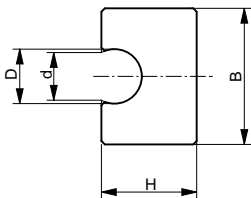
Extruded profiles made from Original Material "S"<sup>®</sup> black are not antistatic.

● ex stock

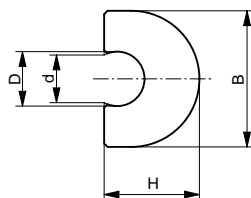
○ at short notice on request



**Clip-on Guides, square**



**Clip-on Guides, round**



Clip-on guides for round bar	Dimensions H/B/d mm	Type	Standard length m	Original Material "S" <sup>®</sup>	Part no.	Availability
square for round bar D = 8mm	14/20/7.0	extruded	2	green black antistatic	211 410 001 211 410 004	● ●
square for round bar D = 10mm	16/22/8.5	extruded	2	green black antistatic	211 410 002 211 410 005	● ●
square for round bar D = 12mm	18/24/10	extruded	2	green black antistatic	211 410 003 211 410 006	● ●
round for round bar D = 8mm	14/20/7.0	extruded	2	green black antistatic	211 410 007 211 410 010	● ●
round for round bar D = 10mm	16/22/8.5	extruded	2	green black antistatic	211 410 008 211 410 011	● ●
round for round bar D = 12mm	18/24/10	extruded	2	green black antistatic	211 410 009 211 410 012	● ●

Tolerances according to DIN2768 or DIN16942, tolerance class g. Intermediate sizes available at short notice and charged at full meter prices. Extruded profiles made from Original Material "S"<sup>®</sup> black are not antistatic.

● ex stock  
○ at short notice on request

